

OA3000 WAN COMMUNICATION INSTRUCTION

Customer Terminal :

1 Device COMM parameter setting :

Switch on the power of the device ,and reference the manual : 2.3.6.2 .then set the COMM parameter as :

Comm.	< Com >
Real-time monitor	< Limit >
Retrieve IP mode	< Static >
Network Interface	< RJ45 >
Server IP	192.168.0.7
Device IP	192.168.0.218
Subnet mask	255.255.255.0
Gateway	192.168.0.1

COMM: select the TCP/IP

Real-time monitor : Limit

Retrieve IP mode : static

Network interface : RJ45

Server IP : the server's WAN IP address.

Device IP : The device's IP address ,

Subnet mask : the device's LAN subnet mask .

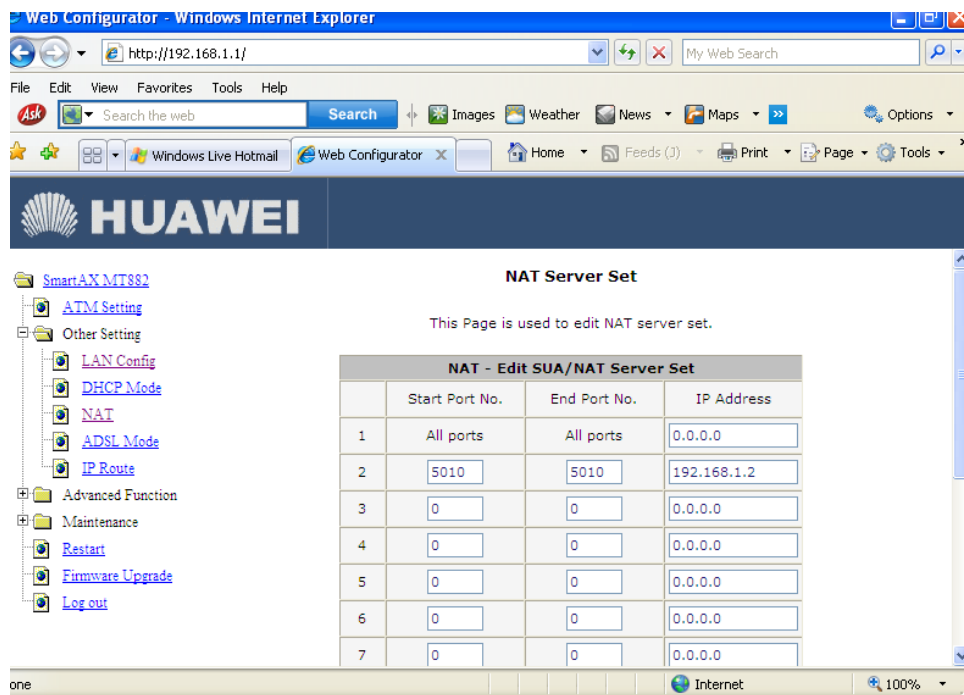
Gateway : the device's LAN gateway .

The connect the device to the router , which is in the LAN for internet ,

Server side setting

1 server router setting :

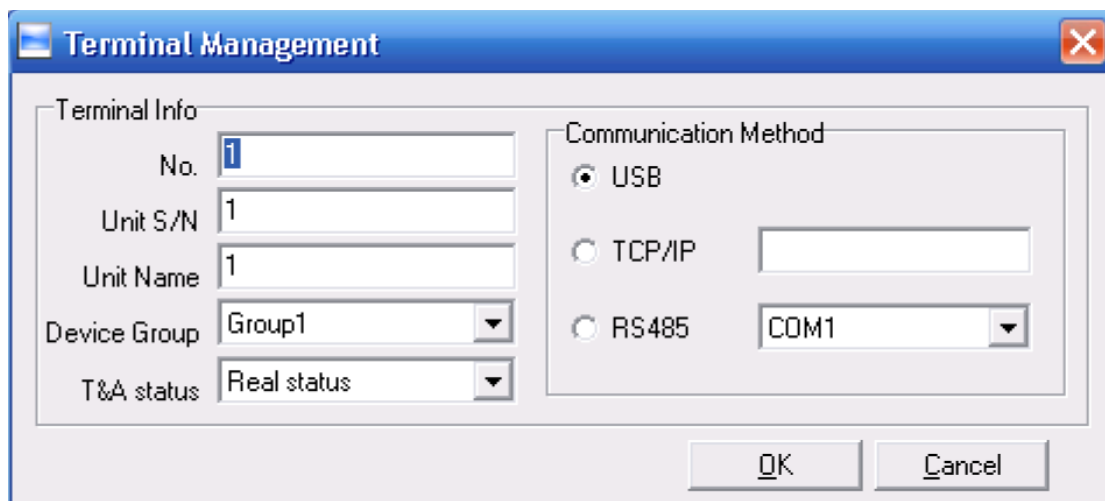
Only need to preinstall the Router 5010 port point to the device IP address :



2 Connect the Router to the Server which is connect to the Internet .

Company setting :

1 Install the attendance software , and set the TCP/IP communication as :



Notice :

No. : fill the device number which you can name it .

Unit S/n : fill in the Device Number ,you may find it in the device menu or at the back of the device bar code .

Unit name : you may rename the device name.

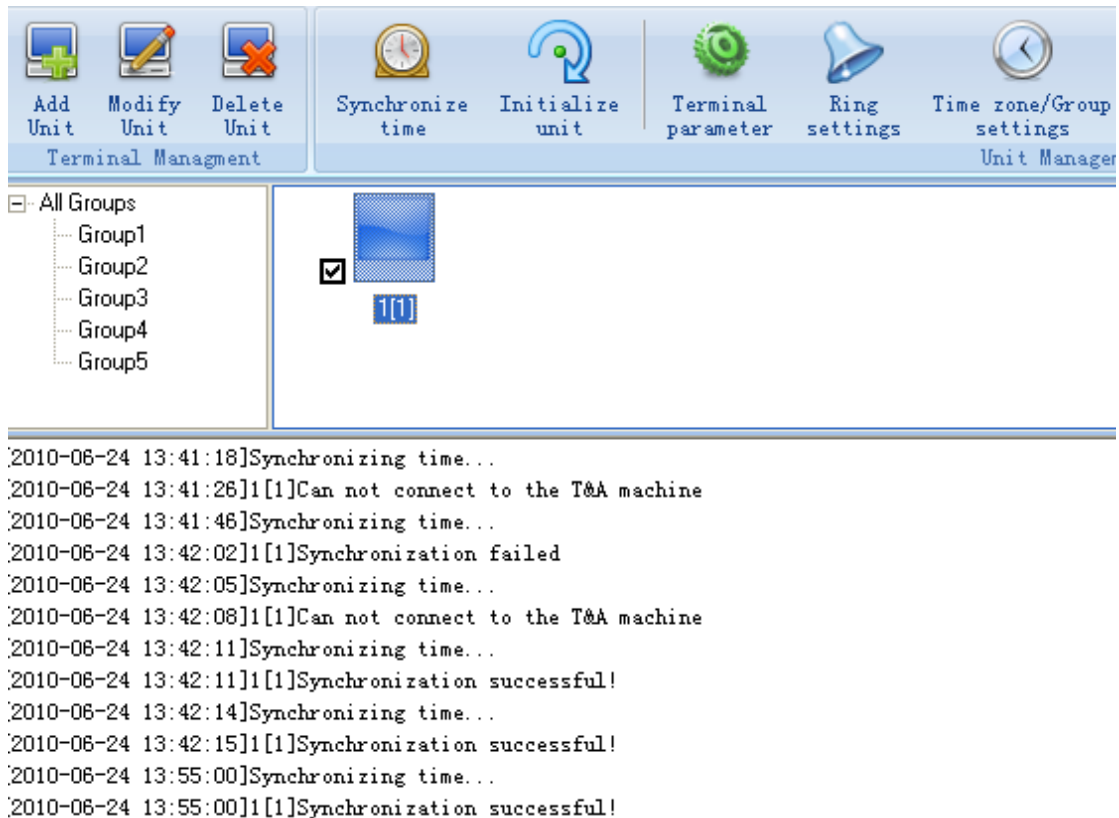
Device Group: in default we select Grout 01

T&A Status : default is Real Status

Communication method : select the TCP/IP , and fill in the device WAN IP address .
Finish setting , press OK button to save it .

2 then close the firewall of your PC , and try to choose the menu “synchronous time” menu in the software .

3 then you may press the “synchronous time” button to test the communication .until it appear the “synchronous time successful” message , it means the communication is successful .



This way , you may try to add more devices .and test the remote web-tracking function .